

# Monkey Apolipoprotein E ELISA development kit

Product Code: 3712M-1H-20

---

CONTENTS, development kit for 20 plates:

**Vial 1 (red top)**

Monoclonal antibody E981 (1 ml)

Concentration: 0.5 mg/ml

**Vial 2 (yellow top)**

Biotinylated monoclonal antibody E887 (500  $\mu$ l)

Concentration: 0.5 mg/ml

**Vial 3 (white top)**

Streptavidin-Horseradish Peroxidase (250  $\mu$ l)

**Vial 4**

Lyophilised recombinant apoE3 standard (5  $\mu$ g)

To ensure total recovery of stated quantity, vials have been overfilled.

**STORAGE:**

Shipped at ambient temperature. On arrival box 1 should be stored refrigerated at 4-8°C and box 2 should be stored frozen at -20°C.

# General

**Intended use:** For quantitative determination of monkey Apolipoprotein E (apoE) in serum/plasma samples and cell culture supernatants.

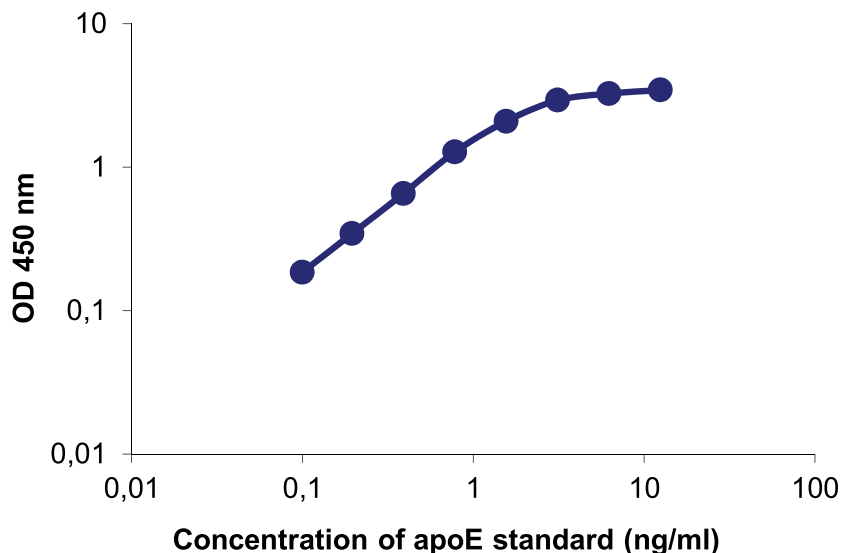
Please note that wash-, block- and incubation buffers should contain detergent. Tween 20, Triton X-100 or NP40 can be used at a concentration of 0.05-0.5%. In block and incubation buffers it is recommended to use 0.1% BSA.

**Serum/plasma samples:** When analyzing serum/plasma samples it is recommended to use Apo ELISA buffer (product code: 3652-M2) for dilution of samples, standard and detection antibody. The buffer prevents false positive read-outs which may be caused by interference of heterophilic antibodies commonly found in plasma and serum. The Apo ELISA buffer has been validated using serum/plasma from normal healthy human blood donors. Serum and plasma samples containing EDTA, citrate or heparin may be used. However, heparin containing samples will give higher apoE values due to displacement of proteoglycan bound apoE. Triton X-treatment of samples, necessary for apoB analysis, will not interfere with apoE analysis. Please see dilution guidelines at <https://www.mabtech.com/knowledge-center/apodilution>. Avoid repeated freezing-thawing cycles.

**Reagents:** Antibodies are supplied in sterile-filtered (0.2  $\mu\text{m}$ ) PBS with sodium azide (0.02%). Streptavidin-HRP is supplied in PBS with 1% BSA and 0.002% Kathon CG.

**Standard range:** 0.1-10 ng/ml

**Standard calibration:** No international standard exists for calibration.



# Guidelines for Monkey Apolipoprotein E ELISA

- Day 1**
1. Coat a high protein binding ELISA plate with mAb E981, diluted to 2  $\mu\text{g}/\text{ml}$  in PBS, pH 7.4, by adding 100  $\mu\text{l}/\text{well}$ . Incubate overnight at 4-8°C.
- Day 2**
2. Wash twice with PBS (200  $\mu\text{l}/\text{well}$ ).
  3. Block plate by adding 200  $\mu\text{l}/\text{well}$  of PBS with 0.05% Tween 20 containing 0.1% BSA (incubation buffer). Incubate for 1 hour at room temperature.
  4. Wash five times with PBS containing 0.05% Tween.
  5. Prepare apoE standard by reconstituting contents of vial 4 in 1 ml PBS with 0.5 mM DTT and 0.1% BSA, do not stir and leave at room temperature for 20 minutes. This gives a stock solution of 5  $\mu\text{g}/\text{ml}$  which should be used immediately or stored in aliquots at -20°C for future use. We recommend the aliquots not to be refrozen after initial use. For the test, prepare dilutions of the stock using the standard range as a guideline.
  6. Add 100  $\mu\text{l}/\text{well}$  of samples or standards diluted in incubation buffer or Apo ELISA buffer for serum/plasma samples and incubate for 1 to 2 hours at room temperature. Dilution recommendations for serum/plasma samples can be found at <https://www.mabtech.com/knowledge-center/apodilution>.
  7. Wash as in step 4.
  8. Add 100  $\mu\text{l}/\text{well}$  of mAb E887-biotin at 1  $\mu\text{g}/\text{ml}$  in incubation buffer or Apo ELISA buffer for serum/plasma samples. Incubate for 1 hour at room temperature
  9. Wash as in step 4.
  10. Add 100  $\mu\text{l}/\text{well}$  of Streptavidin-HRP diluted 1:1000 in incubation buffer. Incubate for 1 hour at room temperature. **Please note that sodium azide used in buffers will inhibit HRP activity.**
  11. Wash as in step 4.
  12. Add 100  $\mu\text{l}/\text{well}$  of appropriate substrate solution e.g. TMB, available from Mabtech product code 3652-F10.
  13. Measure the optical density in an ELISA reader after suitable developing time. If required stop the reaction first.

Developed and manufactured by MABTECH AB, Sweden, whose quality management system complies with the standards ISO 9001:2015 & ISO 13485:2016.



**The products are for research use only.**

MABTECH shall not be liable for the use or handling of the product or for consequential, special, indirect or incidental damages there from.

Mabtech AB (Head Office)  
Sweden  
Tel: +46 8 716 27 00  
mabtech@mabtech.com

Mabtech, Inc.  
USA  
Tel: +1 513 871-4500  
mabtech.usa@mabtech.com