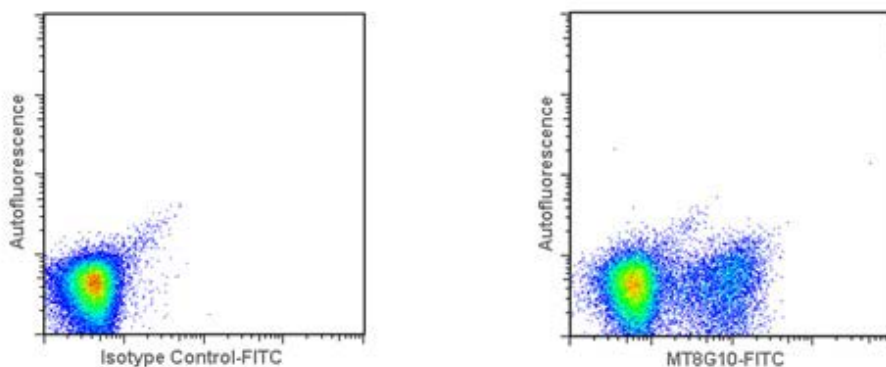


Monoclonal Antibody to Human IL-2

FITC CONJUGATED

Antibody:	MT8G10
Product code:	3445-7
Size:	100 tests
Immunogen:	Recombinant human IL-2
Isotype:	Mouse IgG1
Specificity:	Native and recombinant human IL-2. Native and recombinant IL-2 from cynomolgus macaque. Please visit www.mabtech.com for information on reactivity with other monkey species.
Contents:	Ready-to-use solution of conjugated antibody in sterile filtered (0.2µm) PBS with 0.2% BSA and 0.09% sodium azide.
Purification:	Purified from <i>in vitro</i> cultures by protein G affinity chromatography.
Conjugation:	The MT8G10 antibody has been conjugated to fluorescein isothiocyanate (FITC).
Storage:	Store product at 4-8°C or frozen at -20°C or below. Avoid repeated freezing/thawing.
Applications:	Detection of IL-2 producing cells by flow cytometry. 5 µl is recommended for staining of 1 million cells in a total volume of 50 µl.



Detection of IL-2 by flow cytometry in human peripheral blood mononuclear cells (PBMC). Human PBMC were stimulated with PMA/ionomycin for 16 hours in the presence of Brefeldin A. The cells were then fixed and permeabilized using 4% paraformaldehyde and saponin, and subsequently stained with anti-human IL-2 mAb MT8G10-FITC (right panel). The left panel depicts stimulated cells stained with a matched isotype control antibody. The dot plots derive from a lymphocyte gate. Flow cytometry was performed on a Guava EasyCyte Mini.

MABTECH

Note; for research use only.

Mabtech shall not be liable for the use or handling of the product or for consequential, special, indirect or incidental damages therefrom.

Mabtech AB (Head Office)
Sweden
Tel: +46 8 716 27 00
mabtech@mabtech.com

Mabtech, Inc.
USA
Tel: +1 513 871-4500
mabtech.usa@mabtech.com

Updated on 2020-03-13



Developed and manufactured by MABTECH AB, Sweden, whose quality management system complies with the standards ISO 9001:2015 & ISO 13485:2016.

www.mabtech.com