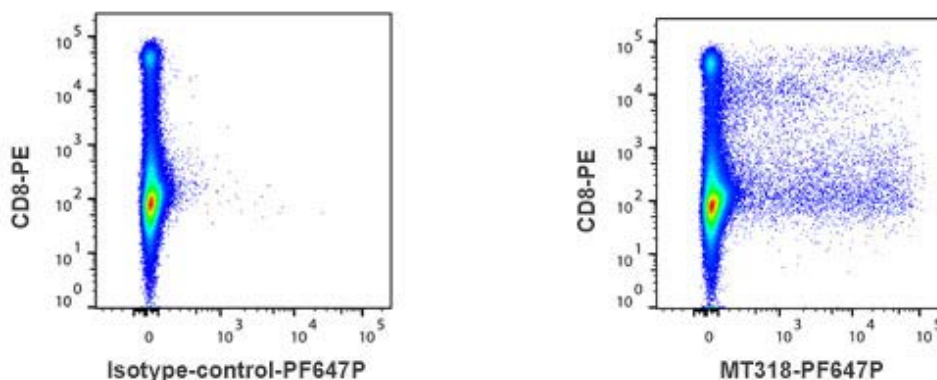


# Monoclonal Antibody to Rabbit IFN- $\gamma$

PF647P CONJUGATED

<b>Antibody:</b>	MT318
<b>Product code:</b>	3110-72-100T
<b>Size:</b>	100 tests
<b>Immunogen:</b>	Recombinant rabbit IFN- $\gamma$
<b>Isotype:</b>	Mouse IgG2a
<b>Specificity:</b>	Native and recombinant rabbit IFN- $\gamma$
<b>Contents:</b>	Ready-to-use solution of conjugated antibody in sterile filtered (0.2 $\mu$ m) PBS with 0.2% BSA and 0.09% sodium azide.
<b>Purification:</b>	Purified from <i>in vitro</i> cultures by protein G affinity chromatography.
<b>Conjugation:</b>	The MT318 antibody has been conjugated to PF647P.
<b>Storage:</b>	Store product at 4-8°C or frozen at -20°C or below. Avoid repeated freezing/thawing.
<b>Applications:</b>	Detection of IFN- $\gamma$ producing cells by flow cytometry. 5 $\mu$ l is recommended for staining of 1 million cells in a total volume of 50 $\mu$ l.



Detection of IFN- $\gamma$  by flow cytometry in viable rabbit spleen cells. Cells were stimulated for 5 hours in the presence of PMA/ionomycin and Brefeldin A. Cells were then fixed and permeabilized using 4% paraformaldehyde and saponin, and subsequently stained with CD8-PE and MT318-PF647P (right panel). The left panel depicts cells stained with a matched isotype control antibody. The dot plots derive from gated events of typical lymphocyte characteristics in forward and side light scatter. Flow cytometry was performed on a BD FACSVerser system.

# MABTECH

Note; for research use only.

Mabtech shall not be liable for the use or handling of the product or for consequential, special, indirect or incidental damages therefrom.

Mabtech AB (Head Office)  
Sweden  
Tel: +46 8 716 27 00  
mabtech@mabtech.com

Updated on 2020-03-13

Mabtech, Inc.  
USA  
Tel: +1 513 871-4500  
mabtech.usa@mabtech.com



Developed and manufactured by MABTECH AB, Sweden, whose quality management system complies with the standards ISO 9001:2015 & ISO 13485:2016.

[www.mabtech.com](http://www.mabtech.com)