

# Analysis of **Human IL-4** by ELISA and ELISpot

Interleukin-4 (IL-4) is produced by activated T cells, especially differentiated CD4+ Th2-type cells, mast cells, and basophils. The most important effects of IL-4 are the regulation of Th cell differentiation to the Th2 type and the regulation of IgE and IgG4 production by B cells. ELISpot detection of IL-4 is particularly useful as the sensitivity of other methods, such as ELISA, is often insufficient.

### Available formats



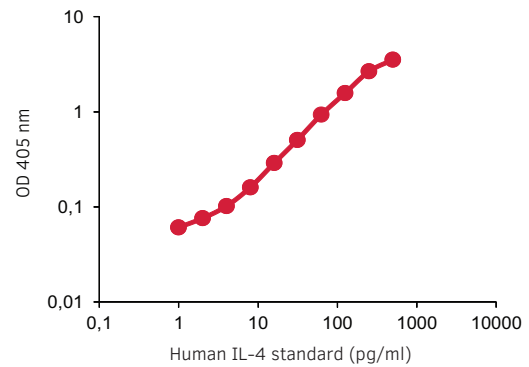
Antibodies



ELISA



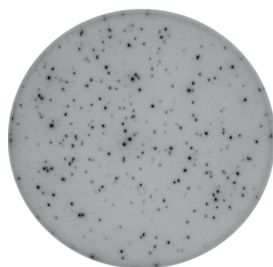
ELISpot



We provide **ELISA** development kits and ELISA<sup>PRO</sup> kits for detection of IL-4. The graph shows a representative standard curve.



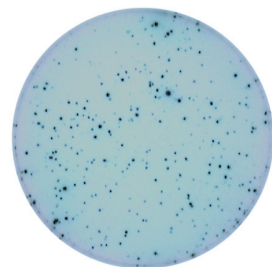
No stimuli



PHA



No stimuli



PHA

For IL-4 analysis by **ELISpot** we offer everything from basic kits to complete kits with pre-coated plates and one-step detection reagents. In the image, PBMCs were incubated overnight with or without PHA. ALP detection.

Human IL-4 analysis by ELISpot. PBMCs were incubated overnight with or without PHA. HRP detection.



PRODUCT	SIZE	CODE
<b>Monoclonal antibodies</b>		
anti-human IL-4 mAb IL4-I, purified	250 µg/1 mg	3410-3- <b>250/1000</b>
anti-human IL-4 mAb IL4-II, biotinylated	250 µg/1 mg	3410-6- <b>250/1000</b>
<b>ELISA</b>		
Human IL-4 ELISA development kit (ALP)	for 6 or 20 plates	3410-1A- <b>6/20</b>
Human IL-4 ELISA development kit (HRP)	for 6 or 20 plates	3410-1H- <b>6/20</b>
Human IL-4 ELISA <sup>PRO</sup> kit, pre-coated	2 or 10 plates	3410-1HP- <b>2/10</b>
<b>ELISpot</b>		
Human IL-4 ELISpot <sup>BASIC</sup> (ALP)	for 4 plates	3410-2A
Human IL-4 ELISpot <sup>BASIC</sup> (HRP)	for 4 plates	3410-2H
Human IL-4 ELISpot <sup>PLUS</sup> (ALP)	2 or 10 white plates	3410-4APW- <b>2/10</b>
Human IL-4 ELISpot <sup>PLUS</sup> (HRP)	2 or 10 white plates	3410-4HPW- <b>2/10</b>
Human IL-4 ELISpot <sup>PRO</sup> (ALP)	2 or 10 white plates	3410-2APW- <b>2/10</b>