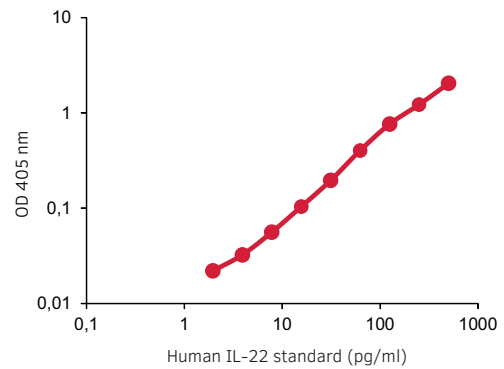
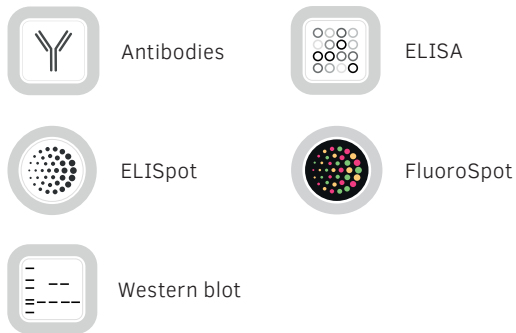


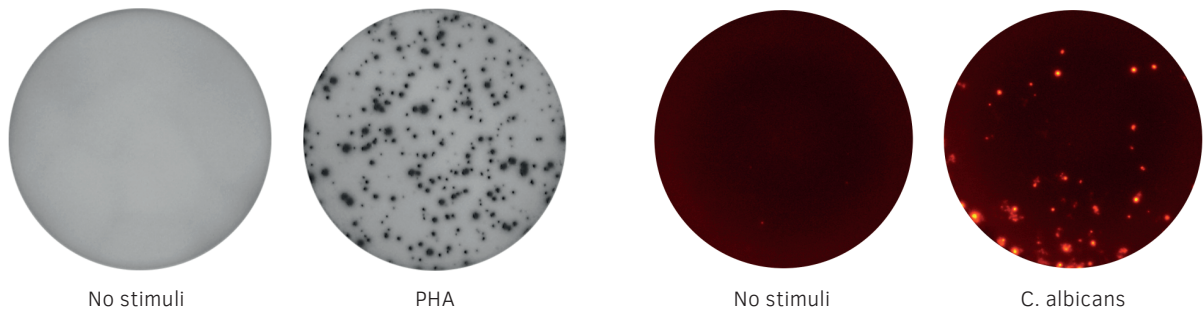
Analysis of **Human IL-22** by ELISA, ELISpot and FluoroSpot

Interleukin-22 (IL-22) is mainly produced by activated T cells. IL-22 plays important roles in inflammatory and infectious diseases and has been associated with autoimmunity. ELISA can be used to determine the concentration of IL-22 whereas ELISpot and FluoroSpot can be used to analyze the number of IL-22-secreting cells. Triple FluoroSpot enables combined analysis of IFN- γ , IL-17A, and IL-22.

Available formats



We provide **ELISA** development kits for detection of IL-22. The graph shows a representative standard curve.



For IL-22 analysis by **ELISpot** we offer basic ELISpot kits and kits supplied with pre-coated plates. In the image, PBMCs were incubated overnight with or without PHA.

Detect IL-22 using single **FluoroSpot** or combine it with IFN- γ and IL-17A in our dual and triple FluoroSpot kits. In the image, PBMCs were incubated overnight with or without *Candida albicans* extract.

| PRODUCT | SIZE | CODE |
|---|----------------------|-------------------------|
| Monoclonal antibodies | | |
| anti-human IL-22 mAb MT12A3, purified | 250 µg/1 mg | 3475-3- 250/1000 |
| anti-human IL-22 mAb MT7B27, biotinylated | 250 µg/1 mg | 3475-6- 250/1000 |
| anti-human IL-22 mAb MT81C62, purified, for WB | 250 µg | 3475-1-250 |
| anti-human IL-22 mAb MT81C62, biotinylated, for WB | 250 µg | 3475-2-250 |
| ELISA | | |
| Human IL-22 ELISA development kit (ALP) | for 6 or 20 plates | 3475-1A- 6/20 |
| Human IL-22 ELISA development kit (HRP) | for 6 or 20 plates | 3475-1H- 6/20 |
| ELISpot | | |
| Human IL-22 ELISpot ^{BASIC} (ALP) | for 4 plates | 3475-2A |
| Human IL-22 ELISpot ^{BASIC} (HRP) | for 4 plates | 3475-2H |
| Human IL-22 ELISpot ^{PLUS} (ALP) | 2 or 10 white plates | 3475-4APW- 2/10 |
| Human IL-22 ELISpot ^{PLUS} (HRP) | 2 or 10 white plates | 3475-4HPW- 2/10 |
| FluoroSpot | | |
| Single FluoroSpot | | |
| Human IL-22 FluoroSpot ^{BASIC} (550) | for 4 plates | FS1-18-550 |
| Dual FluoroSpot | | |
| Human IFN-γ/IL-22 FluoroSpot kit | 2 or 10 plates | FS-0118- 2/10 |
| Human IL-17A/IL-22 FluoroSpot kit | 2 or 10 plates | FS-0318- 2/10 |
| Triple FluoroSpot | | |
| Human IFN-γ/IL-22/IL-17A FluoroSpot kit, pre-coated | 2 or 10 plates | FSP-011803- 2/10 |