

Analysis of **Human IL-21** by ELISA and ELISpot

Interleukin-21 (IL-21) is primarily secreted by CD4+ T cells (in particular follicular T cells and Th17 cells) and is an important regulator of immune responses. Areas in which IL-21 is of particular interest include autoimmune and inflammatory diseases and cancer research. We provide reagents for IL-21 analysis by ELISA and ELISpot as well as mAbs suitable for neutralization of IL-21 bioactivity.

Available formats



Antibodies



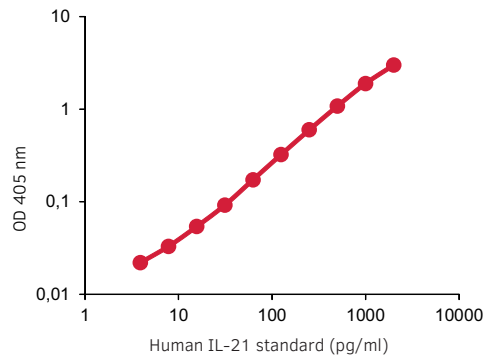
ELISA



ELISpot



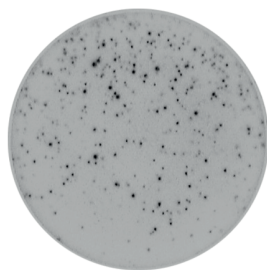
Neutralization



We provide **ELISA** development kits for detection of IL-21. The graph shows a representative standard curve.

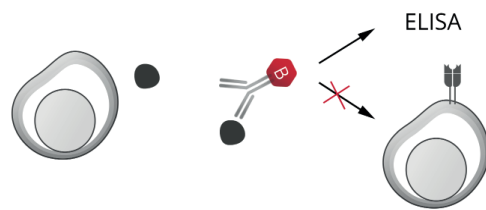


No stimuli



PHA

For IL-21 analysis by **ELISpot** we offer basic ELISpot kits as well as kits with with pre-coated plates. In the image, PBMCs were incubated overnight with or without PHA.



IL-21 producing cell mAb MT21.3m-biotin IL-21R bearing cell

By binding to IL-21 and thus preventing it from interacting with its receptor, mAb MT21.3m-biotin can be used to **retain IL-21 in solution** to be quantified by ELISA.



PRODUCT	SIZE	CODE
Monoclonal antibodies		
anti-human IL-21 mAb MT216G, purified	250 µg/1 mg	3540-1- 250/1000
anti-human IL-21 mAb MT21.3m, biotinylated	250 µg/1 mg	3540-6- 250/1000
anti-human IL-21 mAbs MT216G/21.3m, for Neutralization	500 µg	3540-0N-500
anti-human IL-21 mAb MT21.3m, biotinylated, AF	250 µg	3540-6AF-250
ELISA		
Human IL-21 ELISA development kit (ALP)	for 6 or 20 plates	3540-1A- 6/20
Human IL-21 ELISA development kit (HRP)	for 6 or 20 plates	3540-1H- 6/20
ELISpot		
Human IL-21 ELISpot ^{BASIC} (ALP)	for 4 plates	3540-2A
Human IL-21 ELISpot ^{BASIC} (HRP)	for 4 plates	3540-2H
Human IL-21 ELISpot ^{PLUS} (ALP)	2 or 10 white plates	3540-4APW- 2/10
Human IL-21 ELISpot ^{PLUS} (HRP)	2 or 10 white plates	3540-4HPW- 2/10