

# Analysis of **Human IL-2** by ELISA, ELISpot and FluoroSpot

Interleukin-2 (IL-2) is produced by activated T cells and promotes proliferation, differentiation and survival of antigen-activated T cells and NK cells. ELISA can be used to quantify IL-2 in solution, and ELISpot and FluoroSpot are excellent tools to analyze frequencies and cytokine profiles of antigen-responding T cells.

## Available formats



Antibodies



ELISA



ELISpot



FluoroSpot



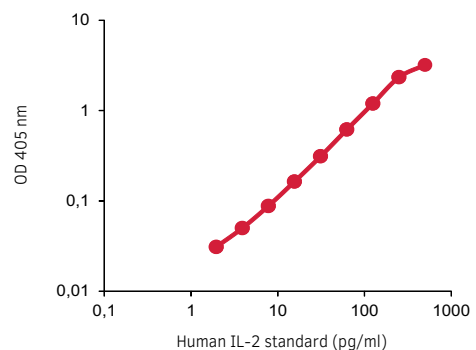
Flow cytometry



Western blot



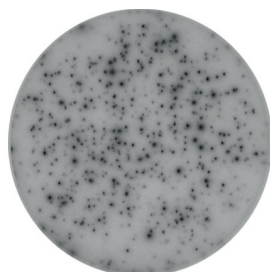
Neutralization



We provide **ELISA** development kits and ELISA<sup>PRO</sup> kits for detection of IL-2. The graph shows a representative standard curve.

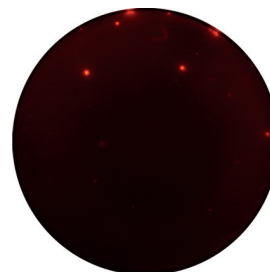


No stimuli

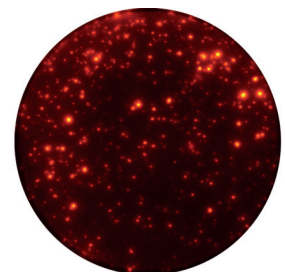


Anti-CD3

For analysis of IL-2 by **ELISpot** we offer basic ELISpot kits as well as kits supplied with pre-coated plates. In the image, PBMCs were incubated overnight with or without anti-CD3.



No stimuli



CEF

Detect IL-2 using single **FluoroSpot** or combine it with IFN- $\gamma$  and TNF- $\alpha$  in our dual and triple FluoroSpot kits. In the image, PBMCs were incubated overnight with or without a pool of viral peptides (CEF).

PRODUCT	SIZE	CODE
<b>Monoclonal antibodies</b>		
anti-human IL-2 mAbs MT2A91/2C95, purified	250 µg/1 mg	3445-3- <b>250/1000</b>
anti-human IL-2 mAb MT8G10, biotinylated	250 µg/1mg	3445-6- <b>250/1000</b>
anti-human IL-2 mAb MT2A91, purified, for WB	250 µg	3445-1-250
anti-human IL-2 mAb MT2A91, biotinylated, for WB	250 µg	3445-2-250
anti-human IL-2 mAb 17H12, for Neutralization	500 µg	3440-0N-500
anti-human IL-2 mAb MT8G10, FITC	100 tests	3445-7
<b>ELISA</b>		
Human IL-2 ELISA development kit (ALP)	for 6 or 20 plates	3445-1A- <b>6/20</b>
Human IL-2 ELISA development kit (HRP)	for 6 or 20 plates	3445-1H- <b>6/20</b>
Human IL-2 ELISA <sup>PRO</sup> kit, pre-coated	2 or 10 plates	3445-1HP- <b>2/10</b>
<b>ELISpot</b>		
Human IL-2 ELISpot <sup>BASIC</sup> (ALP)	for 4 plates	3445-2A
Human IL-2 ELISpot <sup>BASIC</sup> (HRP)	for 4 plates	3445-2H
Human IL-2 ELISpot <sup>PLUS</sup> (ALP)	2 or 10 white plates	3445-4APW- <b>2/10</b>
Human IL-2 ELISpot <sup>PLUS</sup> (HRP)	2 or 10 white plates	3445-4HPW- <b>2/10</b>
<b>FluoroSpot</b>		
Single FluoroSpot		
Human IL-2 FluoroSpot <sup>BASIC</sup> (550)	for 4 plates	FS1-02-550
Dual FluoroSpot		
Human IFN-γ/IL-2 FluoroSpot kit	2 or 10 plates	FS-0102- <b>2/10</b>
Human IFN-γ/IL-2 FluoroSpot kit, pre-coated	2 or 10 plates	FSP-0102- <b>2/10</b>
Triple FluoroSpot		
Human IFN-γ/IL-2/TNF-α FluoroSpot kit, pre-coated	2 or 10 plates	FSP-010209- <b>2/10</b>