



Analysis of **Human IgE** by ELISA and ELISpot

Immunoglobulin E (IgE) is normally found at low levels in serum/plasma but is significantly increased in allergic individuals. The main function of IgE is believed to be related to protection against parasites. However, allergen-specific IgE antibodies may trigger allergic reactions in certain individuals. Detection of allergen-specific IgE is the basis for many in vitro assays for the specific diagnosis of allergy.

Available formats



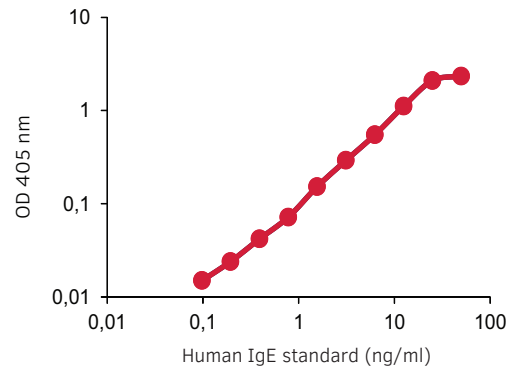
Antibodies



ELISA



ELISpot



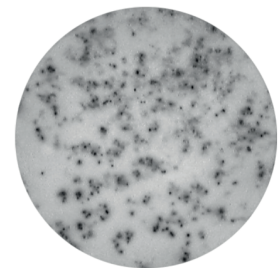
We provide **ELISA** development kits and ELISA^{PRO} kits for detection of IgE. The graph shows a representative standard curve.



We provide **monoclonal antibodies** specific for human IgE. The mAbs are suitable for use in ELISA and ELISpot assays.



No stimuli



Anti-CD40 + IL-4

For analysis of IgE by **ELISpot** we offer basic ELISpot kits. In the image, PBMCs were incubated for 5 days with or without anti-CD40 + IL-4 before secretion of total IgE was analyzed.

See the back for a list of all human IgE products



PRODUCT	SIZE	CODE
Monoclonal antibodies		
anti-human IgE mAb 107, purified	250 µg/1 mg	3810-3- 250/1000
anti-human IgE mAb 182, biotinylated	250 µg/1 mg	3810-6- 250/1000
anti-human IgE mAbs 107/182/101, purified	250 µg/1 mg	3810-7- 250/1000
anti-human IgE mAbs 107/182/101, biotinylated	250 µg/1 mg	3810-8- 250/1000
ELISA		
Human IgE ELISA development kit (ALP)	for 6 or 20 plates	3810-1A- 6/20
Human IgE ELISA development kit (HRP)	for 6 or 20 plates	3810-1H- 6/20
Human IgE ELISA ^{PRO} kit, pre-coated	2 or 10 plates	3810-1HP- 2/10
ELISpot		
Human IgE ELISpot ^{BASIC} (ALP)	for 4 plates	3810-2A
Human IgE ELISpot ^{BASIC} (HRP)	for 4 plates	3810-2H

Human IgE mAb Guide

The table below provides information on how to combine Mabtech's antibodies for use in human IgE ELISA and ELISpot. Total IgE as well as antigen-specific IgE can be detected by using our optimized combinations of monoclonal antibodies.

ELISA	Capture reagent	Detection reagent
Measure total IgE by ELISA	107, purified	182, biotinylated
Measure antigen-specific IgE by ELISA	coat with antigen	107/182/101, biotinylated
ELISpot		
Measure total IgE by ELISpot	107, purified	107/182/101, biotinylated