

Analysis of Bovine IFN- γ by ELISA and ELISpot

Interferon- γ (IFN- γ) is a pro-inflammatory cytokine produced by activated T cells and NK cells. Antigen-specific secretion of IFN- γ is often analyzed in studies of infectious diseases, and ferrets have been used as a model to investigate immune responses to e.g. influenza. ELISA is used to quantify IFN- γ in solution whereas ELISpot is used to analyze frequencies of T cells responding to antigen by secreting IFN- γ .

Available formats



Antibodies



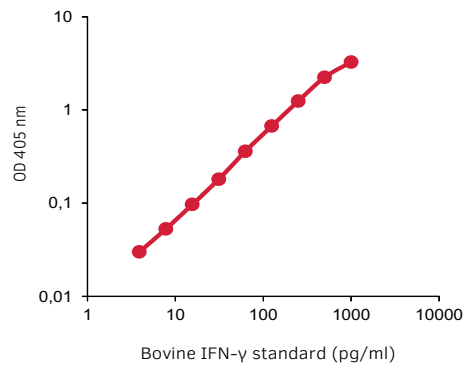
ELISA



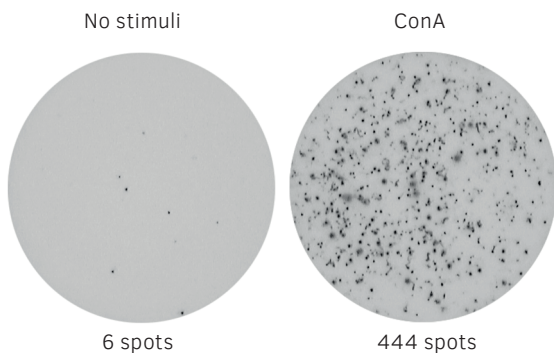
ELISpot



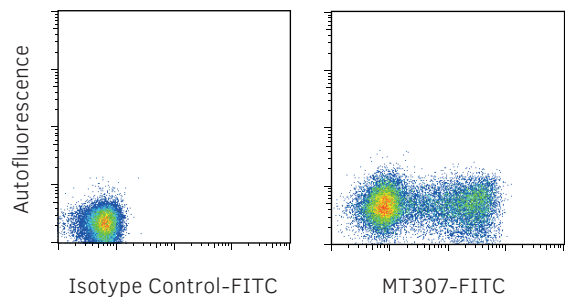
Flow cytometry



We provide **ELISA** development kits for detection of bovine IFN- γ . The graph shows a representative standard curve.



For IFN- γ analysis by **ELISpot** we offer basic ELISpot kits as well as kits supplied with pre-coated plates. In the image, bovine PBMCs were incubated overnight with or without ConA.



Detection of IFN- γ by **flow cytometry** in bovine PBMCs stimulated with PMA/Ionomycin for 16h in the presence of Brefeldin A. The cells were stained with anti-bovine IFN- γ mAb MT307-FITC or a matched isotype control antibody.

PRODUCT	SIZE	CODE
Monoclonal antibodies		
anti-bovine IFN- γ mAb MT17.1, purified	250 μ g/1 mg	3119-3- 250/1000
anti-bovine IFN- γ mAb MT307, biotinylated	250 μ g/1 mg	3119-6- 250/1000
anti-bovine IFN- γ mAb MT307, FITC	100 tests	3119-7
ELISA		
Bovine IFN- γ ELISA development kit (ALP)	for 6 or 20 plates	3119-1A- 6/20
Bovine IFN- γ ELISA development kit (HRP)	for 6 or 20 plates	3119-1H- 6/20
ELISpot		
Bovine IFN- γ ELISpot ^{BASIC} (ALP)	for 4 plates	3119-2A
Bovine IFN- γ ELISpot ^{BASIC} (HRP)	for 4 plates	3119-2H
Bovine IFN- γ ELISpot ^{PLUS} (ALP)	2 or 10 white plates	3119-4APW- 2/10
Bovine IFN- γ ELISpot ^{PLUS} (HRP)	2 or 10 white plates	3119-4HPW- 2/10