

Analysis of **Apolipoproteins** by ELISA, ELISpot and Western blot

Apolipoproteins are of physiological importance and are associated with various diseases such as dyslipidemia and cardiovascular/neurodegenerative disease. Mabtech offers monoclonal antibodies for detection of a wide range of apolipoproteins. The ELISAs are suitable for analysis of cell supernatants and samples from serum/plasma and our ELISpot kits enable detection of apoE secretion at the single-cell level.

Available formats



Antibodies



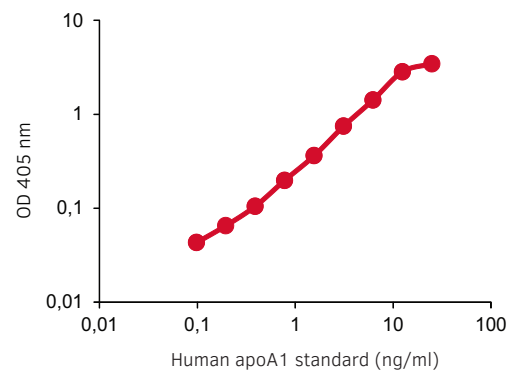
ELISA



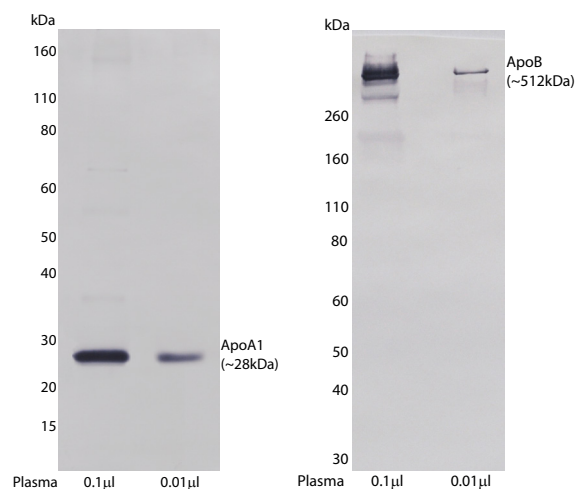
ELISpot



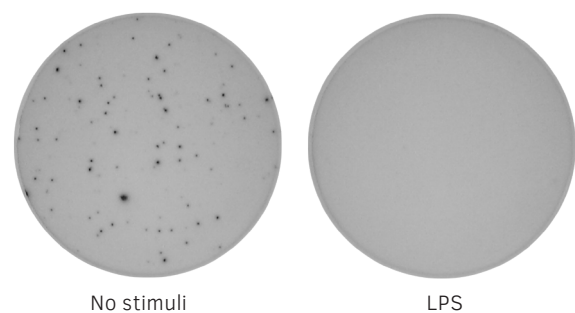
Western blot



We provide **ELISA** development kits and ELISA^{PRO} kits for sensitive detection of apolipoproteins. The graph shows a representative apoA1 standard curve.



Many of our mAbs specific for apolipoproteins can be used in **Western blot**. In the image, human apoA1 and apoB are detected with Western blot using mAb HDL44 and mAb LDL11, respectively.



For apoE analysis by **ELISpot** we offer basic ELISpot kits and kits supplied with pre-coated plates. In the image, overnight incubation of PBMCs with LPS was shown to have a negative effect on apoE secretion.

PRODUCT	SIZE	CODE
Antibodies		
anti-human* apoA1 mAb HDL 110, purified	250 µg/1 mg	3710-3- 250/1000
anti-human* apoA1 mAb HDL 44, biotinylated	250 µg/1 mg	3710-6- 250/1000
anti-mouse apoA1 mAb mHDL93, purified	250 µg/1 mg	3750-3- 250/1000
anti-mouse apoA1 mAb mHDL36, biotinylated	250 µg/1 mg	3750-6- 250/1000
anti-human* apoB mAbs LDL 20/17, purified	250 µg/1 mg	3715-3- 250/1000
anti-human* apoB mAb LDL 11, biotinylated	250 µg/1 mg	3715-6- 250/1000
anti-human* apoB mAb LDL 11, FITC	250 µg	3715-7
anti-human apoD mAb D544, purified	250 µg/1 mg	3714-3- 250/1000
anti-human apoD mAb D263, biotinylated	250 µg/1 mg	3714-6- 250/1000
anti-human apoE mAb E276, purified	250 µg/1 mg	3712-3- 250/1000
anti-human* apoE mAb E887, biotinylated	250 µg/1 mg	3712-6- 250/1000
anti-human/monkey apoE mAb E981, purified	250 µg/1 mg	3712M-3- 250/1000
anti-human* apoH mAb H219, purified	250 µg/1 mg	3711-3- 250/1000
anti-human* apoH mAb H464, biotinylated	250 µg/1 mg	3711-6- 250/1000
anti-human apoJ (Clusterin) mAb J29, purified	250 µg/1 mg	3713-3- 250/1000
anti-human apoJ (Clusterin) mAb J84, biotinylated	250 µg/1 mg	3713-6- 250/1000
anti-human apoM mAbs M5, purified	250 µg/1 mg	3716-3- 250/1000
anti-human apoM mAb M7, biotinylated	250 µg/1 mg	3716-6- 250/1000
ELISA		
Human* apoA1 ELISA development kit (ALP)	for 6/20 plates	3710-1A- 6/20
Human* apoA1 ELISA development kit (HRP)	for 6/20 plates	3710-1H- 6/20
Human* apoA1 ELISA ^{PRO} kit, pre-coated	2/10 plates	3710-1HP- 2/10
Mouse apoA1 ELISA ^{PRO} kit, pre-coated	2/10 plates	3750-1HP- 2/10
Human* apoB ELISA development kit (ALP)	for 6/20 plates	3715-1A- 6/20
Human* apoB ELISA development kit (HRP)	for 6/20 plates	3715-1H- 6/20
Human* apoB ELISA ^{PRO} kit, pre-coated	2/10 plates	3715-1HP- 2/10
Human apoD ELISA ^{PRO} kit, pre-coated	2/10 plates	3714-1HP- 2/10
Human apoE ELISA development kit (ALP)	for 6/20 plates	3712-1A- 6/20
Human apoE ELISA development kit (HRP)	for 6/20 plates	3712-1H- 6/20
Human apoE ELISA ^{PRO} kit, pre-coated	2/10 plates	3712-1HP- 2/10
Monkey apoE ELISA development kit (ALP)	for 6/20 plates	3712M-1A- 6/20
Monkey apoE ELISA development kit (HRP)	for 6/20 plates	3712M-1H- 6/20
Human* apoH ELISA ^{PRO} kit, pre-coated	2/10 plates	3711-1HP- 2/10
Human apoJ (Clusterin) ELISA ^{PRO} kit, pre-coated	2/10 plates	3713-1HP- 2/10
Human apoM ELISA ^{PRO} kit, pre-coated	2/10 plates	3716-1HP- 2/10
ELISpot		
Human apoE ELISpot ^{BASIC} (ALP)	for 4 plates	3712-2A
Human apoE ELISpot ^{BASIC} (HRP)	for 4 plates	3712-2H
Human apoE ELISpot ^{PLUS} (ALP)	2/10 white plates	3712-4APW- 2/10
Human apoE ELISpot ^{PLUS} (HRP)	2/10 white plates	3712-4HPW- 2/10

* Cross-reacts with non-human primate apolipoproteins.